

uhlsport

2022

HYPER ACT





#uhlsquad

aim high.
be part of the best.





Table of Contents



04 SPONSORSHIPS



Technology

06 ADHESIVE FOAM

08 CUT

09 FRAME



Goalkeeper gloves

10 HYPERACT

18 RESIST

22 AQUA

26 COMFORT

30 FRAMES

34 REFINEMENT

Protection

35 BIONIKFRAME

40 KNEE PROTECTOR

41 ELBOW PROTECTOR

Goalkeeper apparel

42 GOALKEEPER SHIRTS

52 GOALKEEPER PANTS

54 GOALKEEPER ACCESSORIES



57 TEAM WEAR



Lukáš Hrádecký



Oliver Baumann



Pavao Pervan



Michael Esser



Erik Domašchke



Kevin Broll



Stefanos Kapino



Tjark Ernst



Markus Kolke



Alexander Schwolow



Sven Ulreich



Philipp Kühn



Ron-Robert Zieler



Rune Jarstein



Christian Mathenia



Martin Männel



Fabian Bredlow



Diant Ramaj



Oliver Christensen



Marcel Schuhen



Benjamin Uphoff



Raphaël Wolf



Jens Grahl



Stefan Drlijača



Markus Schubert



Leopold Zingerle



Jasmin Fejzić



Mariuš Funk



Markus Kuster



Mike Maignan



Yassine Bounou



Anthony Lopes



Anton Shunin



Giorgi Mamardashvili



Stole Dimitrievski



Sergio Herrera



Milan Borjan



Paul Bernardoni



Dimitry Bertaud



Alban Lafont



Jonas Lössl



Ivo Grbić



Odysseas Vlachodimos



Andriy Pyatov



Karl-Johan Johnsson



Benjamin Lecomte



Shūichi Gonda



Alphonse Areola



Diego Alves



Paul Nardi



Etienne Green



Jean Butez



Elías Ólafsson

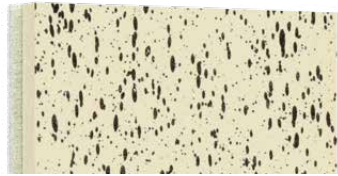


ADHESIVE FOAM TECHNOLOGY



MADE IN GERMANY

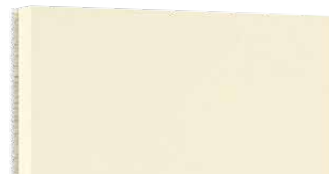
When selecting our performance foams, we place great emphasis on quality, grip and durability.
In order to meet these requirements, we have our adhesive performance foams manufactured in Germany.



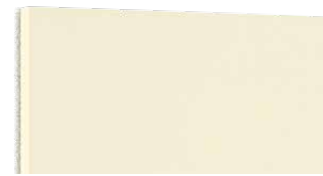
SUPERGRIP+



ABSOLUTGRIP



SUPERSOFT



SOFT



STARTERSOFT

	Grip - Dry	Grip - Wet	Abrasion	Cushioning
5				
4				
3				
2				
1				

Natural + Artificial Grass

	Grip - Dry	Grip - Wet	Abrasion	Cushioning
5				
4				
3				
2				
1				

Natural + Artificial Grass

	Grip - Dry	Grip - Wet	Abrasion	Cushioning
5				
4				
3				
2				
1				

Natural + Artificial Grass

	Grip - Dry	Grip - Wet	Abrasion	Cushioning
5				
4				
3				
2				
1				

Natural + Artificial Grass

	Grip - Dry	Grip - Wet	Abrasion	Cushioning
5				
4				
3				
2				
1				

Natural + Artificial Grass

SUPERGRIP+

High Grip Performance. Supergrip+. A new type of adhesive foam technology with "High Grip" elements. Advantage: ultra-strong grip and optimum durability of the adhesive foam.

* MADE IN GERMANY

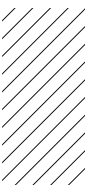
ABSOLUTGRIP

Our patented foam is at its best in dry weather but will not let you down when things get wet.

* MADE IN GERMANY

SOFT

Our soft foams which all have the same thing: The balance between grip and abrasion resistance. The voluminous and softer, the better the grip and greater the abrasion. The more compact, the longer it will last. Only you know your personal balance. Try them. Decide between: SUPERSOFT+, SOFT or STARTERSOFT



CUT-TECHNOLOGY



REFLEX CUT

Innovative inner seam construction ensures a tight fit and maximum ball control.



FINGER SURROUND CUT

Combination of inner seam and ergonomic external design provides a tight fit and maximum grip.



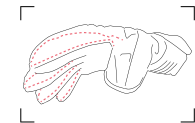
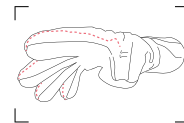
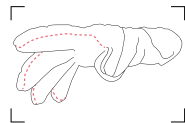
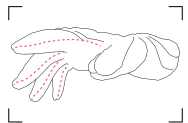
HALF NEGATIVE CUT

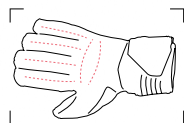
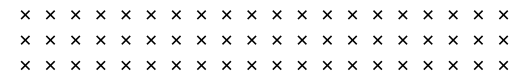
Inner seam construction ensures a tight fit and maximum ball control.



CLASSIC CUT

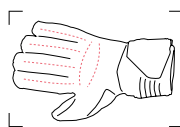
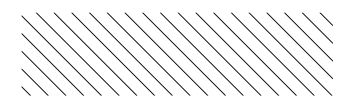
Exterior seam design maximizes the inner hand surface. Sure handedness increases with the contact surface on the ball.





FLEX FRAME CARBON

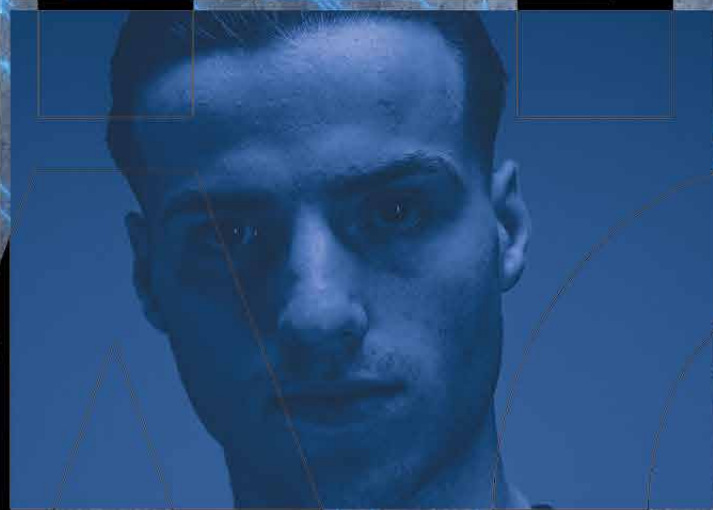
+ The innovative FLEX FRAME CARBON technology ensures maximum finger stabilization thanks to its innovative construction in combination with carbon-reinforced fibers. The new lightweight construction makes the frame hardly noticeable.



FLEX FRAME

+ The innovative FLEX FRAME technology ensures optimal finger stabilization without compromising catch mobility. Innovative materials as well as the ergonomic construction of the frame ensure optimum flexibility and maximum support.





HYPER ACT





ULTIMATE CONTACT

Innovative wrap construction for maximum grip in all catching situations.

REBOUND ZONE

New technology ensures maximum flexibility and optimal fisting.

FLEX ENTRY

Elasticated gusset for maximum flexibility and comfort.

AIRPRENE

Breathable backing material ensures optimal wearing comfort.

DUAL FIX SYSTEM

Innovative closure system ensures optimal fixation and flexibility of the wrist.

SUPERGRIP+

New adhesive foam formula with integrated "high-grip elements" for ultimate grip.





01
night blue/white/fluo yellow



[NEW]

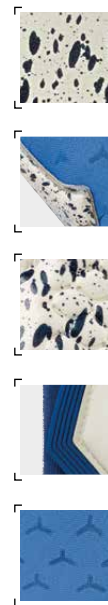
HYPERACT SUPERGRIP+

101 1229

7-11 half

- Foam:**
 - SUPERGRIP+-foam provides thanks integrated "high-grip" elements ultimate grip in all weather conditions.
- Cut:**
 - classic
- Glove body:**
 - AIRPRENE: breathable body material for perfect wearing comfort.
- Closure:**
 - DUAL FIX SYSTEM: innovative closure system for optimized fixation and maximum flexibility of the wrist.
- Features:**
 - REBOUND ZONE provides maximum flexibility and perfect punching.
 - ULTIMATE CONTACT: new wrap-construction for maximum grip in all catching situations.
 - FLEX ENTRY: elastic entry guarantees maximum flexibility and wearing comfort

01
night blue/white/fluo yellow



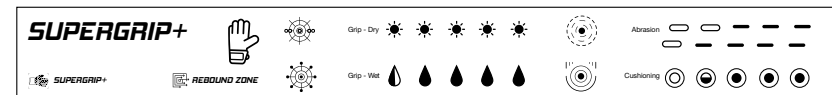
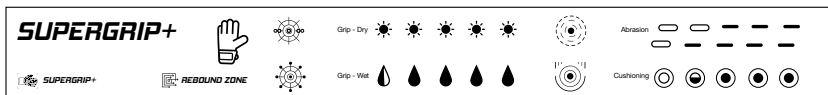
[NEW]

HYPERACT SUPERGRIP+ REFLEX

101 1230

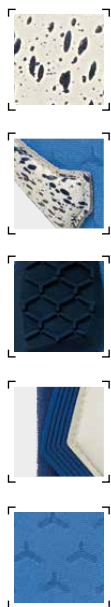
7-11 half

- Foam:**
 - SUPERGRIP+-foam provides thanks integrated "high-grip" elements ultimate grip in all weather conditions.
- Cut:**
 - reflex
- Glove body:**
 - AIRPRENE: breathable body material for perfect wearing comfort.
- Closure:**
 - DUAL FIX SYSTEM: innovative closure system for optimized fixation and maximum flexibility of the wrist.
- Features:**
 - REBOUND ZONE provides maximum flexibility and perfect punching.
 - FLEX ENTRY: elastic entry guarantees maximum flexibility and wearing comfort





01
night blue/white/fluo yellow



HYPERACT SUPERGRIP+ FINGER SURROUND

[NEW]

101 1231

7-11 half

Foam: ■ SUPERGRIP+-foam provides thanks integrated "high-grip" elements ultimate grip in all weather conditions.

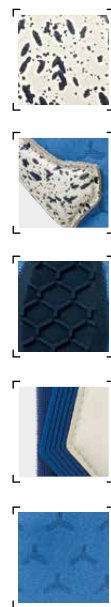
Cut: ■ fingersurround

Glove body: ■ AIRPRENE: breathable body material for perfect wearing comfort.

Closure: ■ DUAL FIX SYSTEM: innovative closure system for optimized fixation and maximum flexibility of the wrist.

Features: ■ REBOUND ZONE provides maximum flexibility and perfect punching.
■ FLEX ENTRY: elastic entry guarantees maximum flexibility and wearing comfort

01
night blue/white/fluo yellow



HYPERACT SUPERGRIP+ HN

[NEW]

101 1232

6,5-11 half

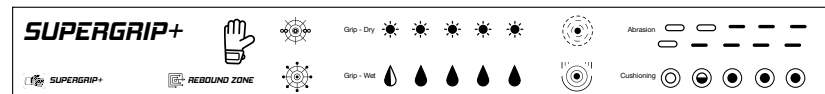
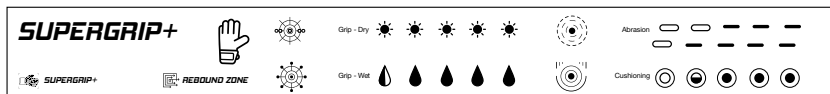
Foam: ■ SUPERGRIP+-foam provides thanks integrated "high-grip" elements ultimate grip in all weather conditions.

Cut: ■ half-negative

Glove body: ■ AIRPRENE: breathable body material for perfect wearing comfort.

Closure: ■ DUAL FIX SYSTEM: innovative closure system for optimized fixation and maximum flexibility of the wrist.

Features: ■ REBOUND ZONE provides maximum flexibility and perfect punching.
■ ULTIMATE CONTACT: new wrap-construction for maximum grip in all catching situations.
■ FLEX ENTRY: elastic entry guarantees maximum flexibility and wearing comfort





01
night blue/white/fluo yellow



HYPERACT ABSOLUTGRIP REFLEX

[NEW]

101 1233

7-11 half

Foam: ▪ patented ABSOLUTGRIP for enhanced cushioning and outstanding grip under all weather conditions

Cut: ▪ reflex

Glove body: ▪ functional neoprene for best flexibility and wearing comfort

Closure: ▪ DUAL FIX SYSTEM: innovative closure system for optimized fixation and maximum flexibility of the wrist.

Features: ▪ embossed REBOUND ZONE provides flexibility and perfect punching.
▪ thumb and side wraps provides perfect fitting and maximum grip
▪ FLEX ENTRY: elastic entry guarantees maximum flexibility and wearing comfort

01
night blue/white/fluo yellow



HYPERACT ABSOLUTGRIP FINGER SURROUND

[NEW]

101 1234

7-11 half

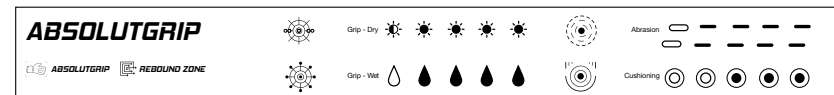
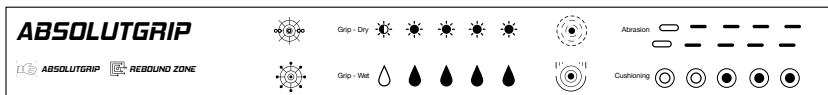
Foam: ▪ patented ABSOLUTGRIP for enhanced cushioning and outstanding grip under all weather conditions

Cut: ▪ fingersurround

Glove body: ▪ functional neoprene for best flexibility and wearing

Closure: ▪ DUAL FIX SYSTEM: innovative closure system for optimized fixation and maximum flexibility of the wrist.

Features: ▪ embossed REBOUND ZONE provides flexibility and perfect punching.
▪ thumb wrap for maximum grip
▪ FLEX ENTRY: elastic entry guarantees maximum flexibility and wearing comfort





01
night blue/white/fluo yellow



HYPERACT ABSOLUTGRIP HN

[NEW]

101 1235

7-11 half

- Foam:**
 - patented ABSOLUTGRIP for enhanced cushioning and outstanding grip under all weather conditions
- Cut:**
 - half-negative
- Glove body:**
 - functional neoprene for best flexibility and wearing
- Closure:**
 - DUAL FIX SYSTEM: innovative closure system for optimized fixation and maximum flexibility of the wrist.
- Features:**
 - embossed REBOUND ZONE provides flexibility and perfect punching.
 - FLEX ENTRY: elastic entry guarantees maximum flexibility and wearing comfort

01
night blue/white/fluo yellow



HYPERACT SUPERSOFT HN

[NEW]

101 1236

4-11 half

- Foam:**
 - exclusive SUPERSOFT latex
- Cut:**
 - half-negative
- Glove body:**
 - breathable and comfortable textile material
- Closure:**
 - wrap-around latex strap and full bandage for good wrist fixation
- Features:**
 - embossed REBOUND ZONE provides flexibility and perfect punching.

ABSOLUTGRIP

ABSOLUTGRIP REBOUND ZONE

Grip - Dry ☀️ ☀️ ☀️ ☀️ ☀️ ☀️

Grip - Wet 🌧️ 💧 💧 💧 💧

Abrasion — — — — —

Cushioning ○ ○ ○ ○ ○

SUPERSOFT

SUPERSOFT REBOUND ZONE

Grip - Dry ☀️ ☀️ ☀️ ☀️ ☀️ ☀️

Grip - Wet 🌧️ 💧 💧 💧 💧

Abrasion — — — — —

Cushioning ○ ○ ○ ○ ○



01
night blue/white/fluo yellow



HYPERACT SUPERSOFT

[NEW]

101 1237

6-11 half

Foam: ▪ exclusive SUPERSOFT latex

Cut: ▪ classic

Glove body: ▪ breathable and comfortable textile material

Closure: ▪ wrap-around latex strap and full bandage for good wrist fixation

Features: ▪ embossed REBOUND ZONE provides flexibility and perfect punching.

01
night blue/white/fluo yellow



HYPERACT SOFT FLEX FRAME

[NEW]

101 1238

4-8 half

8,5-11 half

Foam: ▪ SOFT latex

Cut: ▪ classic

Glove body: ▪ breathable and comfortable textile material

Closure: ▪ wrap-around strap and full bandage for good wrist fixation

Features: ▪ FLEX FRAME technology by uhlsport provides optimized finger stabilization without reducing the catching agility.
▪ embossed REBOUND ZONE provides flexibility and perfect punching.
▪ thumb and side wraps provides perfect fitting and maximum grip

SUPERSOFT

Grip - Dry
 Grip - Wet

 Abrasion
 Cushioning

SOFT

Grip - Dry
 Grip - Wet

 Abrasion
 Cushioning



01
night blue/white/fluo yellow



HYPERACT SOFT PRO

[NEW]

101 1239

5-11 half

Foam: ▪ SOFT latex

Cut: ▪ classic

Glove body: ▪ breathable and comfortable textile material

Closure: ▪ wrap-around strap and full bandage for good wrist fixation

Features: ▪ embossed REBOUND ZONE provides flexibility and perfect punching.

01
night blue/white/fluo yellow



HYPERACT STARTER SOFT

[NEW]

101 1240

2-8 half | 9, 10, 11 full

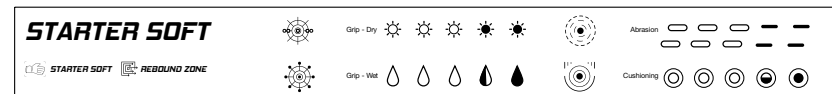
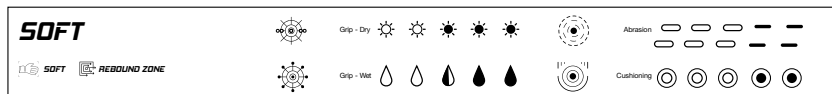
Foam: ▪ exclusive STARTER SOFT latex

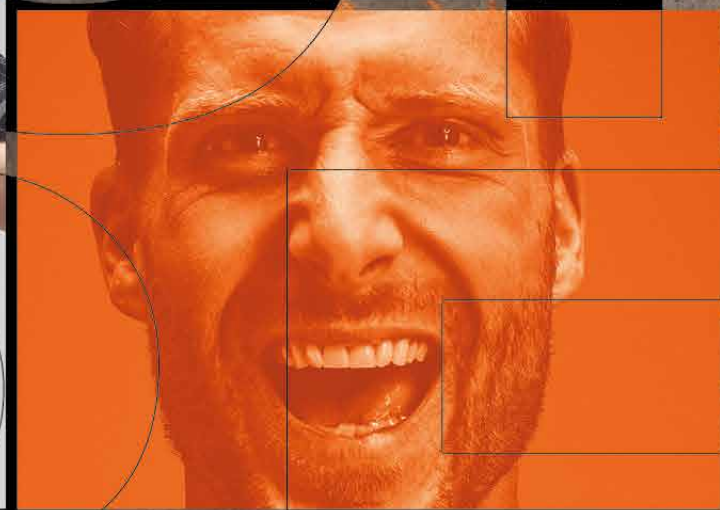
Cut: ▪ classic

Glove body: ▪ breathable and comfortable textile material

Closure: ▪ wrap-around strap and V-notch entry

Features: ▪ embossed REBOUND ZONE provides flexibility and perfect punching.





SUPER RESIST





WRAPS

Thumb and palm wraps for maximum grip.



REBOUND ZONE

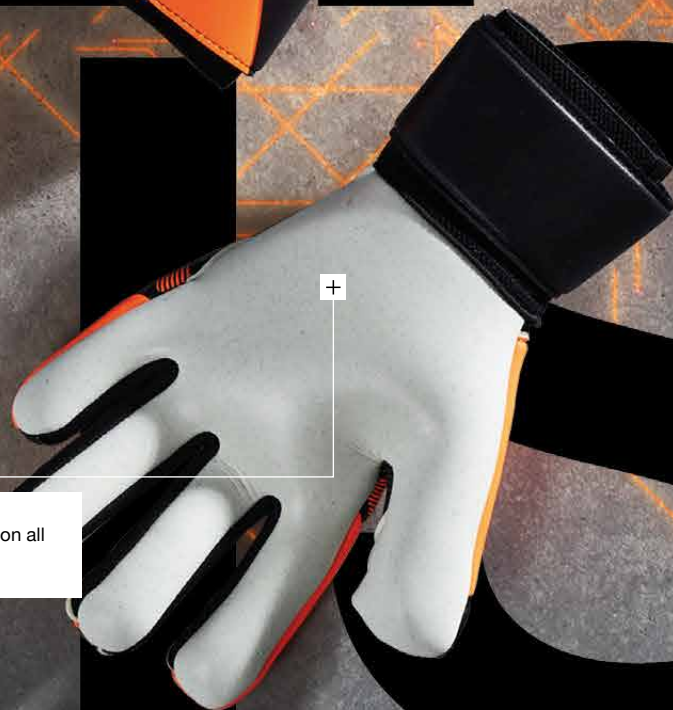
New technology ensures maximum flexibility and optimal fisting.

FASTENING

All-round latex strap and full bandage for perfect hold.

SUPER RESIST

RESIST foam with particles for improved durability on all pitches. Optimal for artificial turf and hard court.





01
black/fluo orange/white



UHLSPORT SUPER RESIST HN

[NEW]

101 1225

3-11 half

Foam: ▪ exclusive abrasion-resistant SUPER RESIST latex

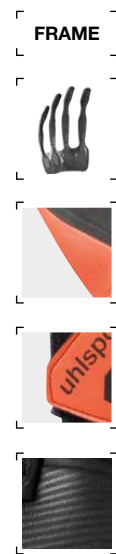
Cut: ▪ half-negative

Glove body: ▪ breathable and comfortable textile material

Closure: ▪ wrap-around latex strap and full bandage for good wrist fixation

Features: ▪ embossed REBOUND ZONE provides flexibility and perfect punching.
▪ thumb and side wraps provides perfect fitting and maximum grip

01
black/fluo orange/white



UHLSPORT SOFT RESIST FLEX FRAME

[NEW]

101 1226

5-11 half

Foam: ▪ exclusive abrasion resistant SOFT RESIST latex

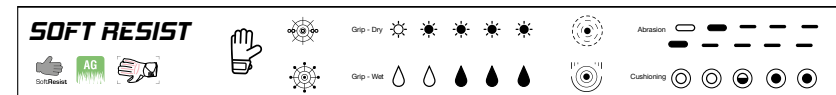
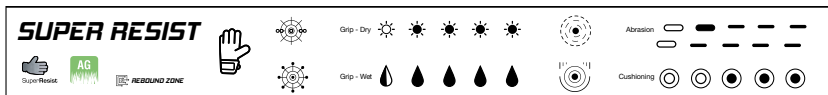
Cut: ▪ classic

Glove body: ▪ breathable and comfortable textile material

Closure: ▪ wrap-around strap and full bandage for good wrist fixation

Features: ▪ embossed REBOUND ZONE provides flexibility and perfect punching.

Frame: ▪ FLEX FRAME technology by uhlSPORT provides optimized finger stabilization without reducing the catching agility.





01
black/fluo orange/white



UHLSPORT SOFT RESIST

[NEW]

101 1227

5-11 half

- Foam:**
 - exclusive abrasion resistant SOFT RESIST latex
- Cut:**
 - classic
- Glove body:**
 - breathable and comfortable textile material
- Closure:**
 - wrap-around strap and full bandage for good wrist fixation
- Features:**
 - embossed REBOUND ZONE provides flexibility and perfect punching.

01
fluo orange/black



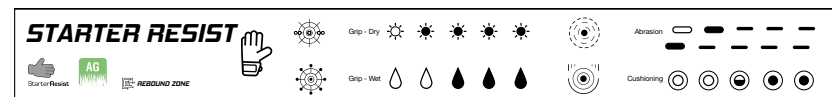
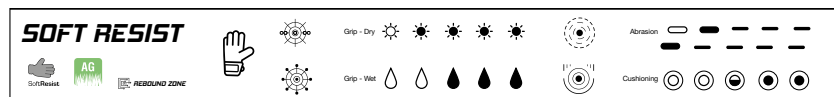
UHLSPORT STARTER RESIST

[NEW]

101 1228

3-8 half | 9, 10, 11 full

- Foam:**
 - exclusive abrasion resistant STARTER RESIST latex
- Cut:**
 - classic
- Glove body:**
 - breathable and comfortable textile material
- Closure:**
 - wrap-around strap and V-notch entry
- Features:**
 - embossed REBOUND ZONE provides flexibility and perfect punching.





AQUAGRIP





ULTIMATE CONTACT

Innovative wrap construction for maximum grip in all catching situations.

REBOUND ZONE

New technology ensures maximum flexibility and optimal fisting.

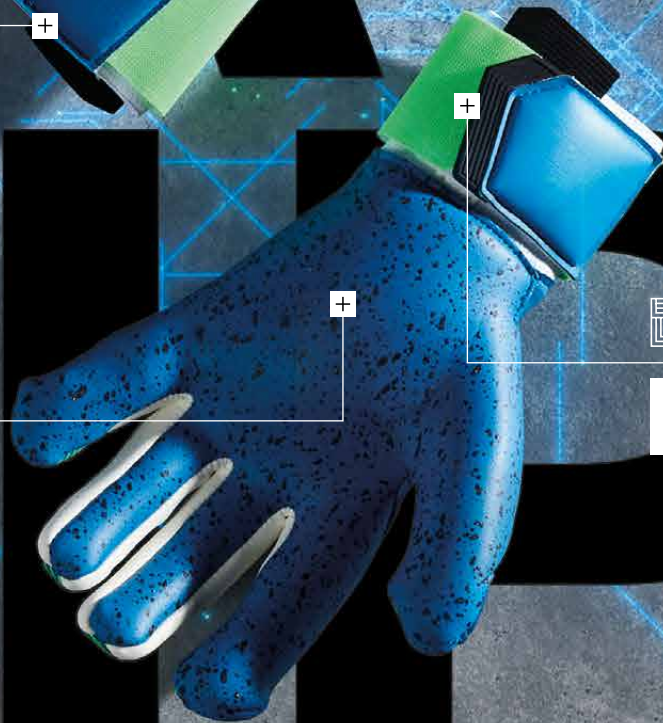


FLEX ENTRY

Elasticated gusset for maximum flexibility and comfort.

AIRPRENE

Breathable backing material ensures optimal wearing comfort.



AQUAGRIP+

uhlsport AQUAGRIP foam provides the ultimate grip level in wet weather thanks to aqua additives paired with "high-grip elements". ultimate grip level in wet weather.

DUAL FIX SYSTEM

Innovative closure system ensures optimal fixation and flexibility of the wrist.



01
pacific blue/fluo green/white



UHLSPORT AQUAGRIP HN

[NEW]

101 1222

7-11 half

- Foam:**
 - AQUAGRIP foam combines Aqua additives with "high-grip" elements for an ultimate grip level in wet conditions.
- Cut:**
 - half-negative
- Glove body:**
 - AIRPRENE: breathable body material for perfect wearing comfort.
- Closure:**
 - DUAL FIX SYSTEM: innovative closure system for optimized fixation and maximum flexibility of the wrist.
- Closure:**
 - REBOUND ZONE provides maximum flexibility and perfect punching.
 - ULTIMATE CONTACT: new wrap-construction for maximum grip in all catching situations.
 - FLEX ENTRY: elastic entry guarantees maximum flexibility and wearing comfort

01
fluo green/pacific blue



UHLSPORT AQUASOFT HN

[NEW]

101 1223

7-11 half

- Foam:**
 - patented AUQASOFT especially for wet weather
 - optimal grip properties in wet conditions for outstanding performance
- Cut:**
 - half-negative
- Glove body:**
 - breathable and comfortable textile material
- Closure:**
 - wrap-around latex strap and full bandage for good wrist fixation
- Features:**
 - embossed REBOUND ZONE provides flexibility and perfect punching.

AQUAGRIP

Grip - Dry ☀️ ☀️ ☀️ ☀️ ☀️ ☀️

Grip - Wet 💧 💧 💧 💧 💧

Abrasion — — — — — — — — — —

Cushioning ○ ○ ○ ○ ○ ○ ○ ○ ○ ○

AQUAGRIP REBOUND ZONE

AQUASOFT

Grip - Dry ☀️ ☀️ ☀️ ☀️ ☀️ ☀️

Grip - Wet 💧 💧 💧 💧 💧

Abrasion — — — — — — — — — —

Cushioning ○ ○ ○ ○ ○ ○ ○ ○ ○ ○

AQUASOFT REBOUND ZONE

01
white/pacific blue/fluo green



UHLSPORT AQUASOFT

[NEW]

101 1224

7-11 half

Foam: ▪ patented AUQASOFT especially for wet weather

Cut: ▪ classic

Glove body: ▪ breathable and comfortable textile material

Closure: ▪ wrap-around latex strap and full bandage for good wrist fixation

Features: ▪ embossed REBOUND ZONE provides flexibility and perfect punching.
▪ thumb and side wraps provides perfect fitting and maximum grip



AQUASOFT 					



ULTRA FLEXIBLE

01
black



COMFORT ABSOLUTGRIP HN

NEW

101 1215

7-11 half

- Foam:**
 - patented ABSOLUTGRIP for enhanced cushioning and outstanding grip under all weather conditions
- Cut:**
 - half-negative
- Glove body:**
 - breathable and comfortable textile material comfort
- Closure:**
 - wrap-around latex strap and full bandage for good wrist fixation
- Features**
 - embossed REBOUND ZONE provides flexibility and perfect punching.

ULTRA FLEXIBLE

01
black



COMFORT ABSOLUTGRIP

NEW

101 1216

7-11 half

- Foam:**
 - patented ABSOLUTGRIP for enhanced cushioning and outstanding grip under all weather conditions
- Cut:**
 - classic
- Glove body:**
 - breathable and comfortable textile material comfort
- Closure:**
 - wrap-around latex strap and full bandage for good wrist fixation
- Features**
 - embossed REBOUND ZONE provides flexibility and perfect punching.

ABSOLUTGRIP  

Grip - Dry      

Grip - Wet     

Abrasion     

Cushioning     

ABSOLUTGRIP  

Grip - Dry     

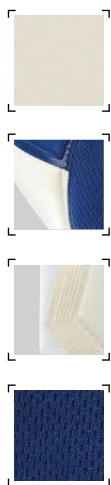
Grip - Wet    

Abrasion    

Cushioning    



01
deep blue/cyan/fluo yellow



UHLSPORT ABSOLUTGRIP TIGHT HN

[NEW]

101 1214

5-7 full | 7-11 half

- Foam:**
 - patented ABSOLUTGRIP for enhanced cushioning and outstanding grip under all weather conditions
- Cut:**
 - half negativ cut for optimized wearing comfort
- Glove body:**
 - functional neoprene for best flexibility and wearing comfort
- Closure:**
 - DUAL FIX SYSTEM: innovative closure system for optimized fixation and maximum flexibility of the wrist.
- Features:**
 - embossed REBOUND ZONE provides flexibility and perfect punching.
 - FLEX ENTRY: elastic entry guarantees maximum flexibility and wearing comfort
 - thumb and side wraps provides perfect fitting and maximum grip

01
black/red/white



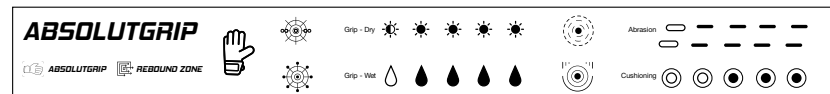
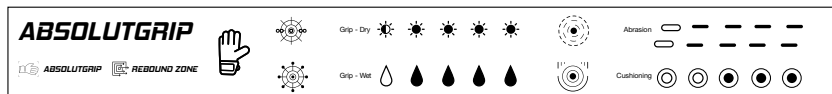
UHLSPORT ABSOLUTGRIP

[NEW]

101 1217

5-7 full | 7-11 half + 12

- Foam:**
 - patented ABSOLUTGRIP for enhanced cushioning and outstanding grip under all weather conditions
- Cut:**
 - classic
- Glove body:**
 - breathable and comfortable textile material
- Closure:**
 - wrap-around latex strap and full bandage for good wrist fixation
- Features:**
 - embossed REBOUND ZONE provides flexibility and perfect punching.
 - thumb and side wraps provides perfect fitting and maximum grip





01
navy/fluo yellow/white



UHLSPORT ABSOLUTGRIP HN PRO JR.

[NEW]

101 1219

3-7 half

- Foam:**
 - patented ABSOLUTGRIP for enhanced cushioning and outstanding grip under all weather conditions
- Cut:**
 - half-negative
- Glove body:**
 - breathable and comfortable textile material
- Closure:**
 - wrap-around latex strap and full bandage for good wrist fixation
- Features:**
 - embossed REBOUND ZONE provides flexibility and perfect punching.

01
navy/fluo orange/white



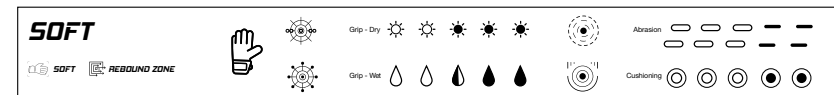
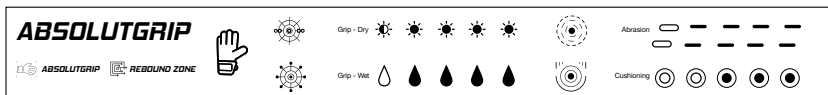
UHLSPORT SOFT HN COMP

[NEW]

101 1220

5-11 half

- Foam:**
 - SOFT-Latex
- Cut:**
 - half-negative
- Glove body:**
 - breathable and comfortable textile material
- Closure:**
 - wrap-around latex strap and full bandage for good wrist fixation
- Features:**
 - embossed REBOUND ZONE provides flexibility and perfect punching.



01
fluo yellow/navy/white



UHLSPORT SOFT ADVANCED

[NEW]

101 1221

3-11 half

Foam: ▪ SOFT-Latex

Cut: ▪ classic

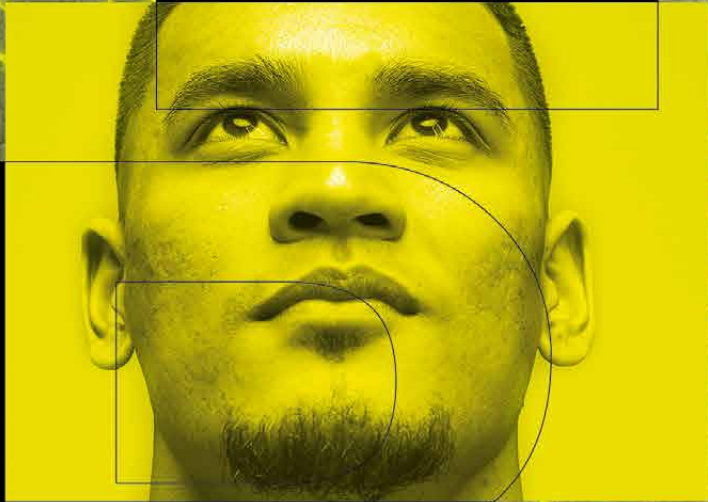
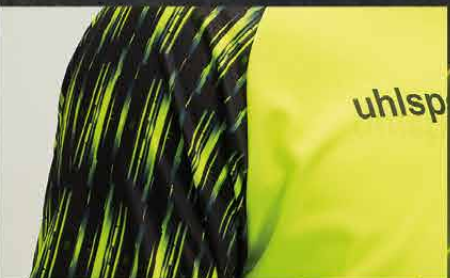
Glove body: ▪ breathable and comfortable textile material

Closure: ▪ wrap-around latex strap and full bandage for good wrist fixation

Features: ▪ embossed REBOUND ZONE provides flexibility and perfect punching.



SOFT			Grip - Dry													Abrasion							
			Grip - Wet													Cushioning							



FLEX FRAME





REBOUND ZONE

New technology ensures maximum flexibility and optimal fisting.

FLEX FRAME CARBON

FLEX FRAME CARBON technology for optimum finger stabilisation and maximum catching mobility.

FLEX ENTRY

Elasticated gusset for maximum flexibility and comfort.

DUAL FIX SYSTEM

Innovative closure system ensures optimal fixation and flexibility of the wrist.

SUPERGRIP+

New adhesive foam formula with integrated "high-grip elements" for ultimate grip.





01
black/fluo yellow



UHLSPORT SUPERGRIP FLEX FRAME CARBON

[NEW]

101 1212

8-11 half

- Foam:**
 - SUPERGRIP+-foam provides thanks integrated "high-grip" elements ultimate grip in all weather conditions.
- Cut:**
 - classic
- Glove body:**
 - functional neoprene for best flexibility and wearing comfort.
- Closure:**
 - DUAL FIX SYSTEM: innovative closure system for optimized fixation and maximum flexibility of the wrist.
- Features:**
 - embossed REBOUND ZONE provides flexibility and perfect punching.
 - FLEX ENTRY: elastic entry guarantees maximum flexibility and wearing comfort
- Frame:**
 - FLEX FRAME CARBON technology provides optimized finger stabilization and maximum catching agility.
 - Wraps on the thumb, index finger, little finger and edges of the hand ensure optimum fit and grip.

01
fluo yellow/black



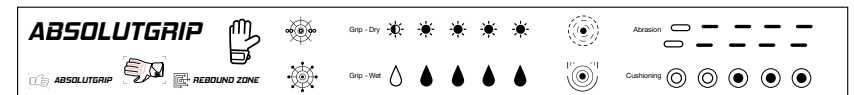
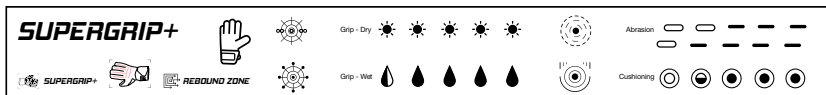
UHLSPORT ABSOLUTGRIP FLEX FRAME CARBON

[NEW]

101 1213

7-11 half

- Foam:**
 - patented ABSOLUTGRIP for enhanced cushioning and outstanding grip under all weather conditions
- Cut:**
 - classic
- Glove body:**
 - breathable and comfortable textile material
- Closure:**
 - DUAL FIX SYSTEM: innovative closure system for optimized fixation and maximum flexibility of the wrist.
- Features:**
 - embossed REBOUND ZONE provides flexibility and perfect punching.
 - FLEX ENTRY: elastic entry guarantees maximum flexibility and wearing comfort
- Frame:**
 - FLEX FRAME CARBON technology provides optimized finger stabilization and maximum catching agility.
 - Thumb wrap for improved grip



01
black/fluo yellow



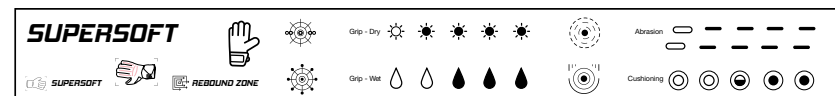
[NEW]

UHLSPORT SUPERSOFT HN FLEX FRAME

101 1218

5-11 half

- Foam:** ▪ exclusive SUPERSOFT latex
- Cut:** ▪ half-negative
- Glove body:** ▪ breathable and comfortable textile material
- Closure:** ▪ wrap-around latex strap and full bandage for good wrist fixation
- Features:** ▪ embossed REBOUND ZONE provides flexibility and perfect punching.
- Frame:** ▪ FLEX FRAME technology by uhlsport provides optimized finger stabilization without reducing the catching agility.





Refinement



GLOVES

LOGO

SPONSOR

REFINEMENT OPTIONS

- club name (single color)
- back number
- player name
- sponsor logo

Complete service from one source.

Let us refine your **uhlsport** products directly according to your individual wishes.

An overview of the complete **uhlsport** refinement offers are available from your **uhlsport** dealer.



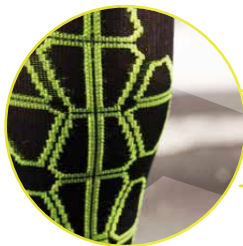
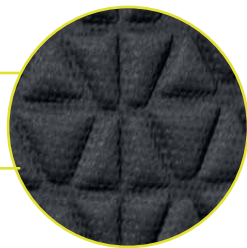
Selected gloves and bags are also printable!



BIONIKFRAME

BEST WEARING COMFORT

textile lamination inside for the best wearing comfort



NANOFLEX

Innovative material for optimized fitting and flexibility. Specially developed to move with your body.

BIONIKPAD

Specially developed padding system for optimized mobility and protection.

RES ZONE

Special resistance zone for less abrasion.

COMPRESSIONSOCKS

Breathable and lightweight, elastic compression socks. Compression zone in the foot area for optimized blood circulation and fitting.



printed uhlsport lettering

narrow binding on neckhole

very light, tight-fitted elastic underlayer



knitted areas for better breathing and temperature management

very light, tight-fitted elastic material



elastic waistband for optimum wearing comfort

flatlock seams provides a comfortable feel on your skin

longtights

printed uhlsport lettering on the back of the calf

01

01



01



Nanoflex: Innovative material for optimized fitting and flexibility. Developed to move with your body



BIONIKFRAME TANK TOP

Art.: 100 5642
Size: S-XXL
Material: 90 % polyester | 10 % spandex

01 black/yellow

01

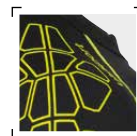


BIONIKFRAME RES LONGTIGHT

Art.: 100 5643
Size: S-XXL
Material: 90 % polyester | 10 % spandex

01 black/yellow

01

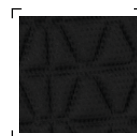


BIONIKFRAME BASELAYER

Art.: 100 5636
Size: S-XXL
Material: 90 % polyester | 10 % spandex

01 black/yellow

01



BIONIKFRAME LONGTIGHT

Art.: 100 5637
Size: S-XXL
Material: 90 % polyester | 10 % spandex

01 black/yellow



**BIONIKFRAME
BODYSUIT**

Side zipper for optimal
slip-in

RES Zone:
Special resistance zone
for less abrasion

Bionikpad:
Specially developed padding
system for optimized mobility and
protection

01



Nanoflex:
Innovative material for
optimized fitting and flexi-
bility developed to move
with your body

BIONIKFRAME BODYSUIT

Art.: 100 5635
Size: S-XXL
Material: 91 % polyester | 9 % spandex

01 black/yellow





Bionikpad:
Specially developed padding system for optimized mobility and protection

Nanoflex:
Innovative material for optimized fitting and flexibility Developed to move with your body

RES Zone:
Special resistance zone for less abrasion

Nanoflex:
Innovative material for optimized fitting and flexibility Developed to move with your body

01



BIONIKFRAME PADDED SHORTS

Art.: 100 5638
Size: S-XXL
Material: 91 % polyester | 9 % spandex

01 black/yellow



01



BIONIKFRAME UNPADDED SHORTS

Art.: 100 5640
Size: S-XXL
Material: 91 % polyester | 9 % spandex

01 black/yellow



KNEE-PROTECTOR FOR OPTIMAL PROTECTION

Bionikpad:
Specially developed padding system for optimized mobility and protection



01

Nanoflex:
Innovative material for optimized fitting and flexibility developed to move with your body

ergonomic shape provides better wearing comfort



BIONIKFRAME KNEE-PROTECTOR

Art.: 100 6967

Size: S-XL /PAIR

Material: 45 % ethylenvinylacetat | 30 % polyester | 25 % nylon

01 black/yellow



01

Bionikpad:
Specially developed padding system for optimized mobility and protection



Nanoflex:
Innovative material for optimized fitting and flexibility developed to move with your body

elastic compression sock for better fitting and fixation

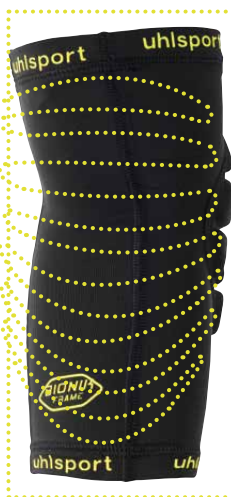
ELBOW-PROTECTOR FOR OPTIMAL PROTECTION



BIONIKFRAME ELBOW-PROTECTOR

Art.: 100 6966
Size: S-XL /PAIR
Material: 55 % Ethylenvinylacetat | 45 % Nylon

01 black/yellow





round neck collar with rip insert



uhlsport wording printed



rip on the sleeve ends



03



cut and sewn design on the front

polyester, mesh materialmix

cord inside elastic waistband



no inside slip

uhlsport wording print on left leg

contrasted color inserts



19



03



DISTINCTION COLOR BASELAYER

Art.: 100 3078
Größe: 116-164
 S-XXXL
Material: 88 % Polyester | 12 % Elasthan |
 smartbreathe® FIT

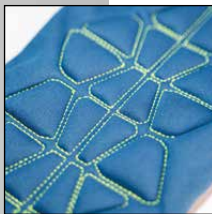
19 nightblau

OFFENSE 23 GOALKEEPER SET

Set
Shirt &
Shorts

Art.: 100 5204
Size: 128-164
 S-XXXL
Material: 100 % polyester

01 white/black/yellow



03

round neckline with ribbed insert

cut and sewn design on the front

uhlsport printed on chest

material mix of polyester and mesh

elastic waistband with adjustable cord

ergonomic pad on knee and hip



elbow pads with contrast stitching

elastic arm cuffs

uhlsport embroidery on right leg



03



Set
Shirt &
Pants

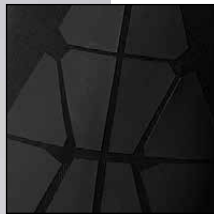
OFFENSE 23 GOALKEEPER SET JUNIOR

Art.: 100 5203
Size: 116-164
Material: 100% polyester | Interlock

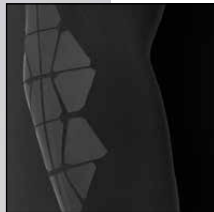
02 black/yellow/white



uhlsport print on right chest



REACTION
sublimation print
on both sleeve



smartbreathe® LITE
print



elastic waistband with cords



01

raglan sleeves

made of recycled Polyester
("FOR THE PLANET")



without slip

uhlsport print on left leg



uhlsport print on right chest

smartbreathe® FIT
print

TPU print on elbow



stretchable zone at the calf and
below ankle area



cotton foot

uhlsport wording on top of toes

REACTION GOALKEEPER SET



Art.:	100 3667	Set including socks
size:	128	28-32
	140	33-36
	152-164	37-40
	S	37-40
	M-XXXL	41-44
material:	100% recycled polyester	

01 black, 03 fluo yellow/black

[Period incl. 2023]



01

uhlsport wording print on right chest

REACTION sublimation print on both sleeves

smartbreathe® LITE print on front

cords inside waistband secured with bartacks

topstitching on paddings

paddings with outline stitching in contrast colour

round neck collar with rib

hergestellt aus recyceltem polyester („FOR THE PLANET“)

with elbow paddings

contrast rib insert on sleeve opening

made of recycled Polyester ("FOR THE PLANET")

uhlsport wording print in contrast colour

pants with hip and knee padding





03



Set
Shirt &
Pants

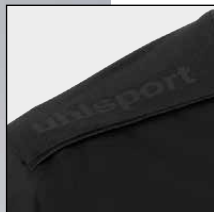
REACTION GK JR. SET



Art.:	100 3668
size:	116-164
material:	100% recycled polyester

01 black/antra, 03 fluo gyellow/black

[Period incl. 2022]



13

goalkeeper shirt with round collar

printed uhlsport lettering

contrast piping on front

contrasting rib inserts on the sleeve

smartbreathe®
CLASSIC



elastic drawstring waistband

no inside slip



uhlsport lettering printed on the left leg

contrast mesh inserts on the sides for maximum breathability

01



TOWER GOALKEEPER SHIRT LONGSLEEVED

Art.: 100 5612
Size: 128-164
 S-XXL
Material: 100 % polyester | smartbreathe® CLASSIC

07 yellow/black, 09 dynamic orange/black/yellow,
 10 white/black/yellow

CLUB SHORTS



Art.: 100 2233
Size: 116-164
 S-XXXL
Material: 100 % polyester

01 black/white, 02 white/black, 12 dynamic orange/black

Can also be combined with Center Basic Short p. 28



01



highly elastic and comfortable main material

functional goalkeeper tights

cord inside elasticated waistband

cushioning pads made of new polyurethan foam with good cushioning specs and low material thickness

uhlsport logo print on left leg



GOALKEEPER-TIGHT

NEW

Art.: 100 5601
Size: 128-164
S-XXL
Material: 80 % Polyamid | 20 % Elasthan

01 black

01



cord inside elastic waistband

embroidered uhlsport lettering on the left leg

stretch ribbing in the back leg area for a perfect fit

ergonomically adapted knee and hip padding

durable interlock material



ANATOMIC GOALKEEPER LONGSHORTS

Art.: 100 5625
Size: 128-164
S-XXL
Material: 100 % Polyester | Interlock

01 black



01



cord inside elastic waistband

uhlsport lettering on left thigh

ergonomic padding on hip and knees

uhlsport logo on left leg

01



padded goalkeeper pants

uhlsport lettering on left thigh

ergonomic padding on hip and knees

uhlsport logo on left leg

tight leg closure with elastic rib on the calf

01



padded goalkeeper pants

uhlsport lettering on left thigh

ergonomic padding on hip and knees

uhlsport logo on left leg

tight leg closure with elastic rib on the calf



STANDARD GOALKEEPER PANTS

Art.: 100 5617
Size: 116-164
S-XXXL
Material: 100 % Polyester

01 black

ESSENTIAL GOALKEEPER PANTS

Art.: 100 5619
Size: 116-164
S-XXXL
Material: 100 % Polyester

01 black

ANATOMIC KEVLAR GOALKEEPER PANTS

Art.: 100 5618
Size: 116-164
S-XXXL
Material: 100 % Polyester | Interlock

01 black



01



GOALKEEPER CARE TOWEL

Art.: 100 0995
Size: 42 x 30 cm
Material: 100 % polyester

01 grey

- light and absorbent micro fibre towel
- fast drying and extrem absorbent
- perfect for cleaning and drying the goalkeeper gloves

02



REFLEX BALL

Art.: 100 1612
Size: one size

02 fluo green/navy/white

- goalkeeper training ball**
- specially for the training of the reflexes
 - robust TPU-Material

01



FLEECE TUBE

Art.: 100 5053
Material: 100 % polyester | fleece

01 black

- embroidered uhlsport lettering
- fleece tube with cord and stopper
- also used as a cap



Index

100 0995	54	100 5625	52	101 1216	26	101 1230	12
100 1612	54	100 5635	38	101 1217	27	101 1231	13
100 2233	51	100 5636	37	101 1218	33	101 1232	13
100 3078	43	100 5637	37	101 1219	28	101 1233	14
100 3667	47	100 5638	39	101 1220	28	101 1234	14
100 3668	49	100 5640	39	101 1221	29	101 1235	15
100 5053	54	100 5642	37	101 1222	24	101 1236	15
100 5203	45	100 5643	37	101 1223	24	101 1237	16
100 5204	43	100 6966	41	101 1224	25	101 1238	16
100 5601	52	100 6967	40	101 1225	20	101 1239	17
100 5612	51	101 1212	32	101 1226	20	101 1240	17
100 5617	53	101 1213	32	101 1227	21		
100 5618	53	101 1214	27	101 1228	21		
100 5619	53	101 1215	26	101 1229	12		

IMPRINT

uhlsport GmbH
Klingenbachstraße 3
72336 Balingen
Germany

Tel.: +49 (0) 7433 268-0
Fax: +49 (0) 7433 268-194
E-Mail: info@uhlsport.com

Visit us on uhlsport.com or follow us on social-media:

@uhlsport
 @uhlsport.de
 @uhlsportDE
 uhlsportTV
 brand.uhlsport.com

Photography: Marc Schäfer Photography

Pictures in this catalogue are from the following sources:

Alexander Mader
DPA Picture Alliance GmbH
Pressefoto ULMER
Pedro Martins
Shimizu S-Pulse



In the interest of better readability, we refrain from using both the masculine and other forms in the absence of gender-neutral wording. The chosen masculine formulations therefore apply without restriction to the other genders as well.

Our main catalogues are printed with an innovative UV printing solution to achieve improved recyclability. Thanks to the use of a new type of ink series, the printing ink can be removed more easily in the recycling process, enabling optimal recycling management.

The paper we use for printing, Soporset Premium Offset, has been certified according to the paper specification OCR (ISO 1831:1980), high opacity, with volume, EU Ecolabel and FSC®.



Subject to technical modifications, misprints, errors and price revisions. Colours may appear different in print from the original colours. All prices quoted are manufacturer's recommended prices. Any copying or reproduction of any part of this catalogue is only allowed with the expressed permission of uhlsport GmbH. uhlsport GmbH January 2022



Available from June 2022

uhlsport

2022

HYPER ACT

